

MUSICX V1.10 RELEASED



MUSICX, the industry-leading stormwater modelling tool, has been completely re-designed and rewritten while maintaining all the capabilities of classic MUSIC.

MUSICX is the most significant upgrade of MUSIC in a decade. The users will see many additional benefits in our upcoming production release (v1.10) including a powerful and flexible tabular data editor.

New features in MUSICX v1.10:

- Tabular model data editor
- Text/Excel export and import features for nodes
- Muskingum Link storage routing
- Summary Report Generation capability (like MUSIC v6.3)
- Background image supported
- Improvement in Results Manager
- Editable Advance Model parameters
- Additional functionalities

Our live demonstration will offer an opportunity to see firsthand how this vital tool is helping to inform the development of water quality and quantity standards in our towns and cities across Australia and overseas.

MUSICX is a critical tool that enables urban developers, planners, and engineers to manage the impact of urban development and other land use changes on waterways.

To learn more about MUSIC head to our website >
ewater.org.au/products/

MUSICX 1.1



The eWater team has been working hard on a number of updates to MUSICX, with a new version out now, highlights include:

- MUSIC-link
- The ability to add notes to individual nodes
- Additional recorders, including Overflow, Pipe flow, Water Level, Storage, Water Demand and Reuse
- allowing a Monthly Pattern as Data Source for PET

[Download here](#)

[Watch the release webinar](#)

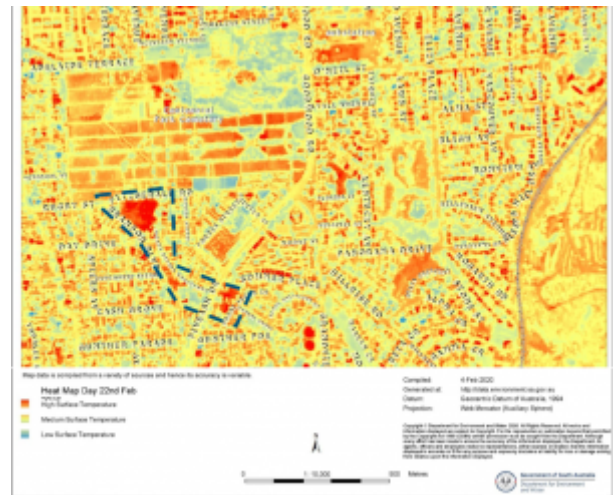
REVITALISING ADELAIDE'S DRAINAGE RESERVES



REVITALISED RESERVES CONNECTING COMMUNITIES

Designing a Stormwater System for an Urban Biodiversity Corridor

The drainage reserves that run diagonally through Pasadena from the Adelaide Hills to the Plains are hot, dry and barren.



On an urban heat map (right), the reserves show up as the hottest areas in the locality, scarring the otherwise leafy suburb. Due to open unirrigated bare ground, the reserves contribute more urban heat island impacts than surrounding roads and structures.

The site is near a popular shopping centre, important recreation areas and in an area destined for further urban infill. A radically different passive recreation space is needed to serve the community both now and into the future, and climate change makes quality open spaces rarer.

Revitalising Reserves with a Biodiversity Corridor

Water Technology completed a conceptual design of a multi-function stormwater system for a new Biodiversity Corridor. The stormwater system diverts runoff into a number of underutilised reserves within the City of Mitcham in the Adelaide foothills.

The project revitalises the reserves by providing much-needed water for irrigation and new native tree plantings. This is achieved by daylighting urban stormwater runoff from underground pipes into open channels within the reserves and diverting runoff to infiltration trenches for passive irrigation.

In this way, stormwater management will help deliver multiple benefits, including improving public health, local biodiversity, and providing a green and open space for the

local community to reconnect.

eWater MUSIC was a key Water Sensitive Urban Design conceptual design tool used for the project. eWater MUSIC allowed engineers to model multiple stormwater management functions and evaluate the resulting multiple benefits of the Biodiversity Corridor.

The Biodiversity Corridor concept design completed by Water Technology's engineering consultants included design input from Outerspace Landscape Architects and was carried out in consultation with the City of Mitcham (below).

Pasadena Biodiversity Corridor Concept Plan

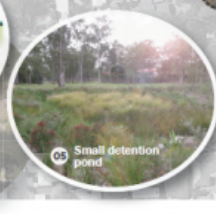
Branson Reserve

- Existing 1200mm pipe within Centennial Park Cemetery relocated as 900mm pipe along Rugby Street
- Offtake from Branson Boulevard main pipeline to irrigate trees
- Vegetated swale with detention ponds to filter water
- 1.5 ML retention basin with outlet to main pipeline, batters 1:6 and 1:5m max water level
- Smart automated outlet to provide detention storage when needed, discharging to main pipeline
- Stormwater harvesting scheme to provide 20ML per year for irrigation
- Opportunity to construct BMX pump track in NWV corner of Branson Reserve from 2000m³ of spoil



Sierra Nevada Reserve

- Grassed swale with small sized detention ponds to capture stormwater
- Rock riffles at intervals along swale to slow water flow with reed and sedge planting to filter water



OUTER SPACE

Project: PASADENA BIODIVERSITY CORRIDOR
Client: CITY OF MITCHAM
Drawing: CONCEPT PLAN



Scale: 1:1000 @ A1

Date: 24-02-20
Dwg No.: OS2004_CP01
Revision: B

Drawn By: BP
Checked By: KB
Approved By: KB

Legend

- Existing underground stormwater pipeline
- Offtake or diversion pipe to/from main pipeline (dashed)
- Detention basin with rockwork weir overflow and piped outlet to swale, vegetated with endemic biofiltration species
- Detention basin with outlet to s/w, vegetated with endemic biofiltration species
- Small Detention pond with outlet to s/w, vegetated with endemic biofiltration species
- Dryland grass swale with rock riffles planted with biofiltration species
- Native tree planting e.g. Eucalyptus sp. irrigated via infiltration trench/pipe from swale
- Proposed walking trail
- Opportunity to construct BMX pump track from excavated clay soils
- Consider relocating and upgrading play space
- Opportunity for grassed kickabout area
- Opportunity to modify Fitzgerald Road to strengthen connection to cemetery

Grant Jacob Reserve

- Diversion of main pipeline
- 1.1ML detention basin with low flow outlet to dryland swale and overflows to existing main pipeline
- Vegetated swale with rock riffles to cleanse water prior to outlet to existing G.I.P.

The design brings stormwater flows from the underground drainage pipes within the reserves to the surface to create a lush, green, passively irrigated recreation space that establishes a biodiversity corridor linking the Adelaide Hills to the Plains.

Developing green space is a focus, with hundreds of new trees and native vegetation understory plantings all sustained by soakage trenches filled by the above-ground

creek flows. Increased moisture availability supports healthier canopies with no supplementary watering even in the longest and hottest dry summer, and most of all, lots of shade to draw people to the space to recreate.

Not only will flora and fauna be drawn to the reserves, but also the community as the reserves will become a focal point for residents to visit, walk, run, explore, and engage with nature through the new trails, nature play water areas, benches and BBQ facilities, Kaurua edible garden, and BMX track.

In an area subject to high urban infill, small lot sizes, and minimal canopy cover, the Pasadena Biodiversity Corridor will become a place that brings the community in and allows them to enjoy a cool, vibrant, passive recreation space among native trees, birds, and animals.

Concept Design Features

The concept design provides for daylighting existing stormwater drains within and near several reserves in Pasadena. The design features extensive new native plantings that will be passively irrigated via daylighted stormwater flows conveyed and filtered through a series of raingardens, infiltration trenches and swales. Detention basins are required to attenuate the daylighted flows to offset a future reduction in pipe capacity proposed at a location downstream of the reserves.

As such, a key design requirement for the Biodiversity Corridor was that the stormwater system needed to perform multiple functions delivering multiple benefits.

The functions and benefits included stormwater harvesting for storage and irrigation of reserves and export off-site, low flow diversions for passive irrigation of new tree plantings, and biofiltration basins, ponds and swales to improve water

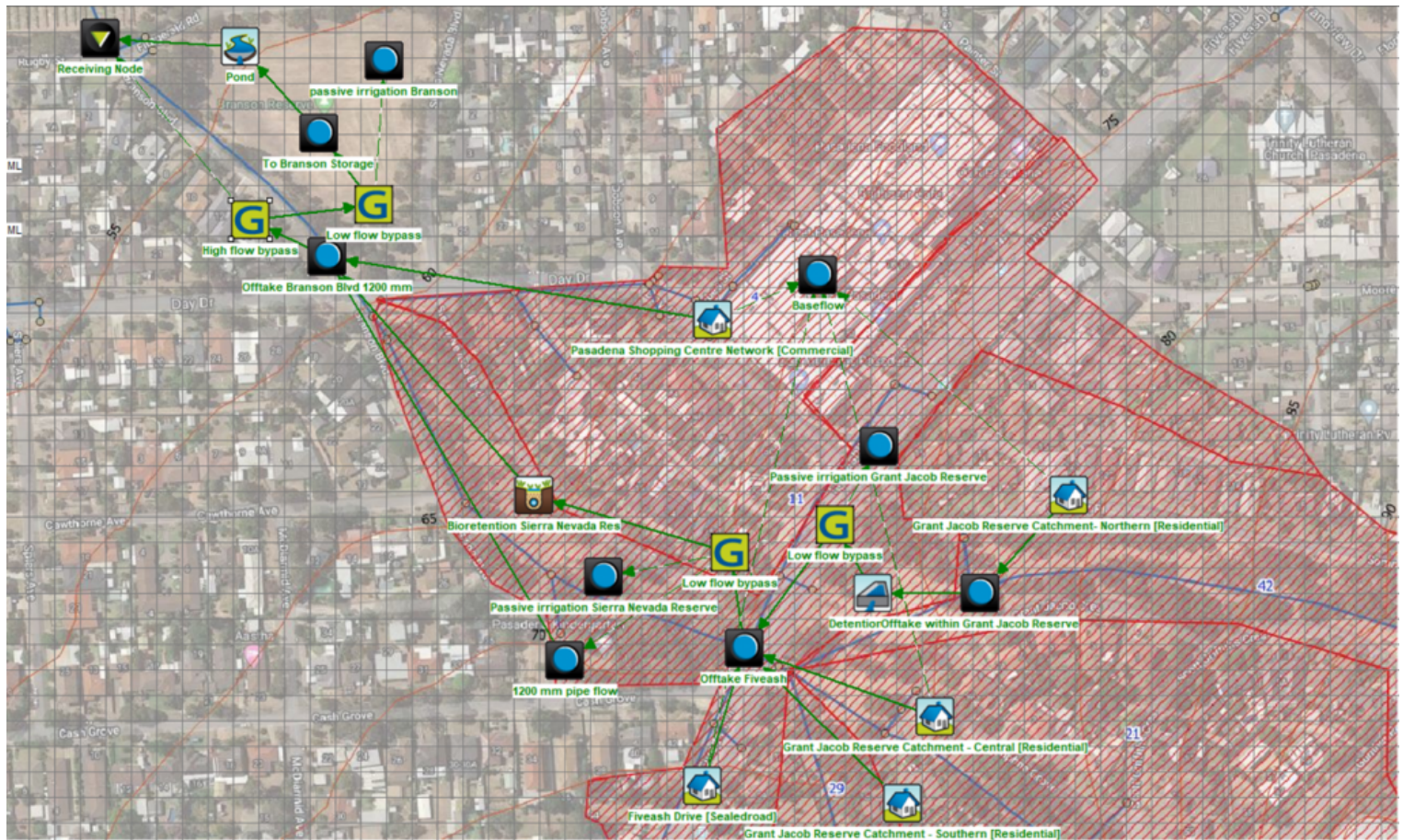
quality.

In addition, the system must distribute low flows equally to the various reserves to keep the new plantings watered consistently.

eWater MUSIC

Including multiple functions and delivering multiple benefits increased the complexity of the stormwater system for the Biodiversity Corridor. Designing and evaluating the system's performance was a key challenge.

eWater MUSIC was an essential Water Sensitive Urban Design tool for navigating the complexity of the conceptual design of the Biodiversity Corridor (below).



In particular, eWater MUSIC software was used to:

- estimate stormwater runoff volumes from developed areas
- estimate and analyse the sensitivity of stormwater harvesting yield
- estimate low flow volumes available for diversion as passive irrigation
- design biofiltration basins
- assess pond storage inundation frequency
- estimate water quality improvement required for a

stormwater harvesting scheme

- estimate the water available for passive irrigation to promote urban cooling.

eWater MUSIC has several unique features that assisted with designing and evaluating Water Sensitive Urban Design approaches in the Biodiversity Corridor. These included:

- Secondary links from nodes allowed low flow diversions to be modelled and optimised.
- Biofiltration, swale and pond treatment nodes allowed treatment of stormwater to a quality fit for harvesting to be modelled.
- Advanced charting within MUSIC allowed rapid assessment of flow frequency at different locations to ensure the system provides equitable distribution of low flows.
- Stormwater harvesting demand patterns and custom demands allowed sensitivity analysis and the viability of a harvesting scheme to be assessed.

eWater MUSIC made a complex stormwater model simple to

modify and evaluate. Using eWater MUSIC for conceptual design, ensured that the Biodiversity Corridor has the best opportunity to remain robust, sustainable and functional, and will provide multiple ongoing benefits to the local community.

Next Steps

Following construction, the Biodiversity Corridor will become the 'jewel in the crown' for the local suburbs, giving the community access to a lush, cool, green space to walk, explore, recreate, and relax.

The upgrade will improve accessibility for the community by connecting the reserves to the adjacent streets, linking footpaths and trails, and providing all-weather walking surfaces, as well as solar bollard lighting for night safety along the path. Rather than dividing the suburb like a peace wall, the reserves will become a location that integrates the community.

The addition of thousands of new native trees and plants will

promote the connection of birds and animals from the Hills Face area to the urban plains, expanding their natural environment. By creating the use of passive stormwater as irrigation, it will create a location that is self-sustaining and climate resilient.

Further Information

For further information on the project please contact Water Technology at the details below.



Dr Michael Di Matteo –
Water Technology

Dr Michael Di Matteo

michael.dimatteo@watertech.com.au

Phone: (08) 8378 8000

1/98 Greenhill Road, EASTWOOD SA 5063

Ben Taylor



Ben Taylor –
Water Technology

ben.taylor@watertech.com.au

National Practice Lead – Urban Water

Phone: (08) 8378 8000

1/98 Greenhill Road, EASTWOOD SA 5063



INTRODUCING MUSIC X



MUSICX is the most significant upgrade to the industry standard MUSIC in a decade.

MUSICX has been re-designed and re-written into modern software coding platform, maintaining all the capability of MUSIC V6.3 but giving users additional functionality and the benefits of modern software architecture.

The real strength of MUSICX is the ability to link your urban water quality models with your eWater Source catchment and river system models and urban demand models (Urban Developer plugin). Allowing the whole water system to be modeled with the one tool providing a platform for exploring possible interactions and new ways of managing water.

For those who are focused on the urban context alone, MUSICX can be run separate to Source, allowing you to continue to use it the way you always have, with the benefit of modern software architecture.

Watch the MUSICX launch video to learn more

Transitioning to MUSICX

MUSICX is a major change to the software. We know that some of our community need time to learn the new features and transition to MUSICX. To ease the transition, MUSIC 6.3.0 remains available and eWater will continue to provide

support services.