



# e-flows: the need for a systems perspective

**Speaker:** Gary Jones

30 May 2012



Data S/E NOAA, U.S. Navy, NSA, GEBCO

© 2012, ChesSpot Image

31° 39' 01.07" S 147° 51' 36.43" E elev. 202 m

Google earth

Eye at: 2187.62 km





Google earth

© 2012 Cnes/Spot Image

36°00'19.35" S, 148°06'47.09" E elev: 132 m

Eye alt: 279.98 km





Image © 2012 DigitalGlobe

Image © 2012 GeoEye

© 2012 CNES/Spot Image

Google earth

Imagery Date: 8/3/2011

35° 51' 26.78" S, 145° 07' 42.75" E, elev. 109 m

Eye alt: 54.39 km





Image © 2012 DigitalGlobe

Google earth

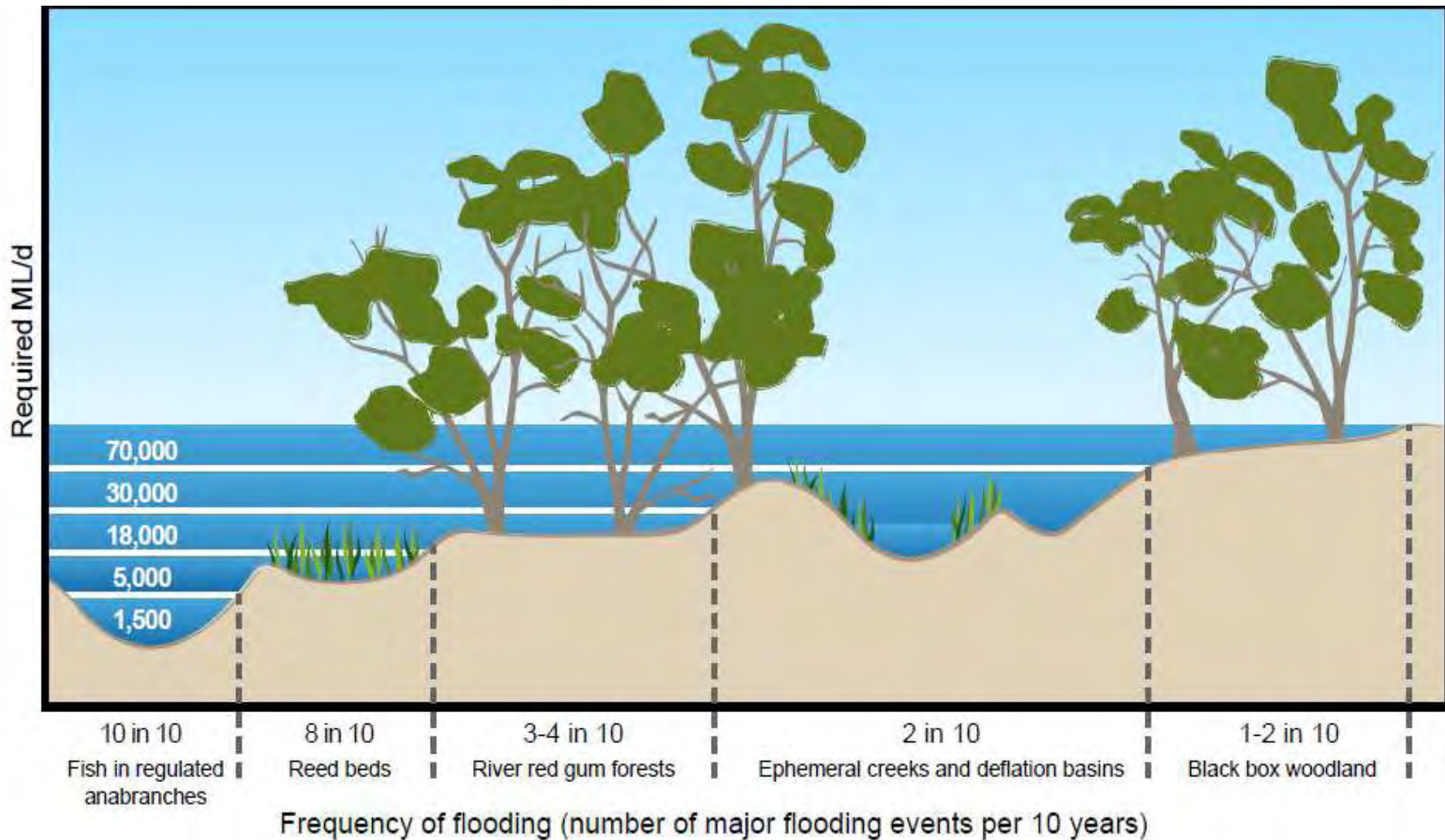
Imagery Date: 8/31/2006 2006

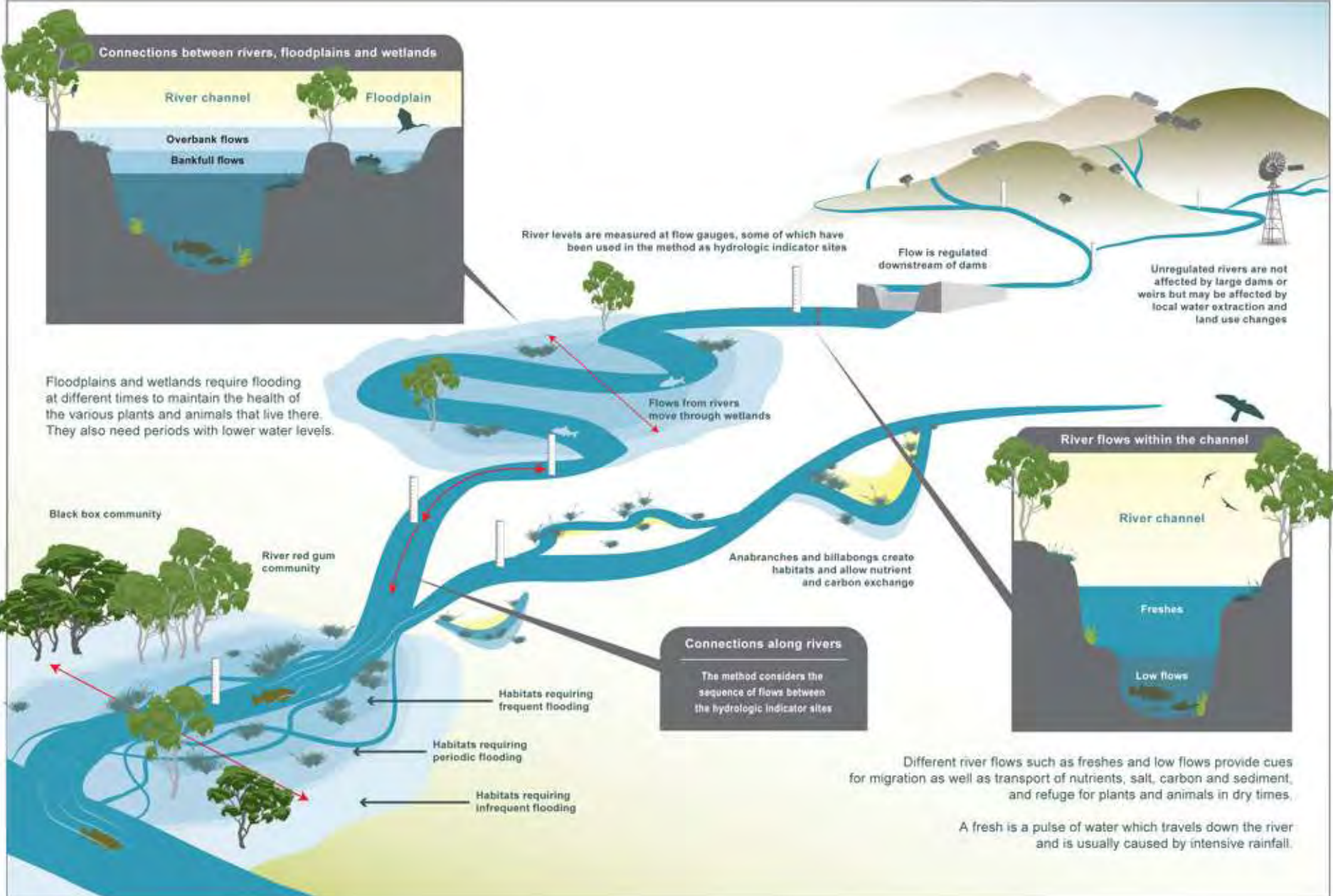
35°50'02.59" S, 145°03'23.92" E, elev. 104 m

Eye alt 785 m





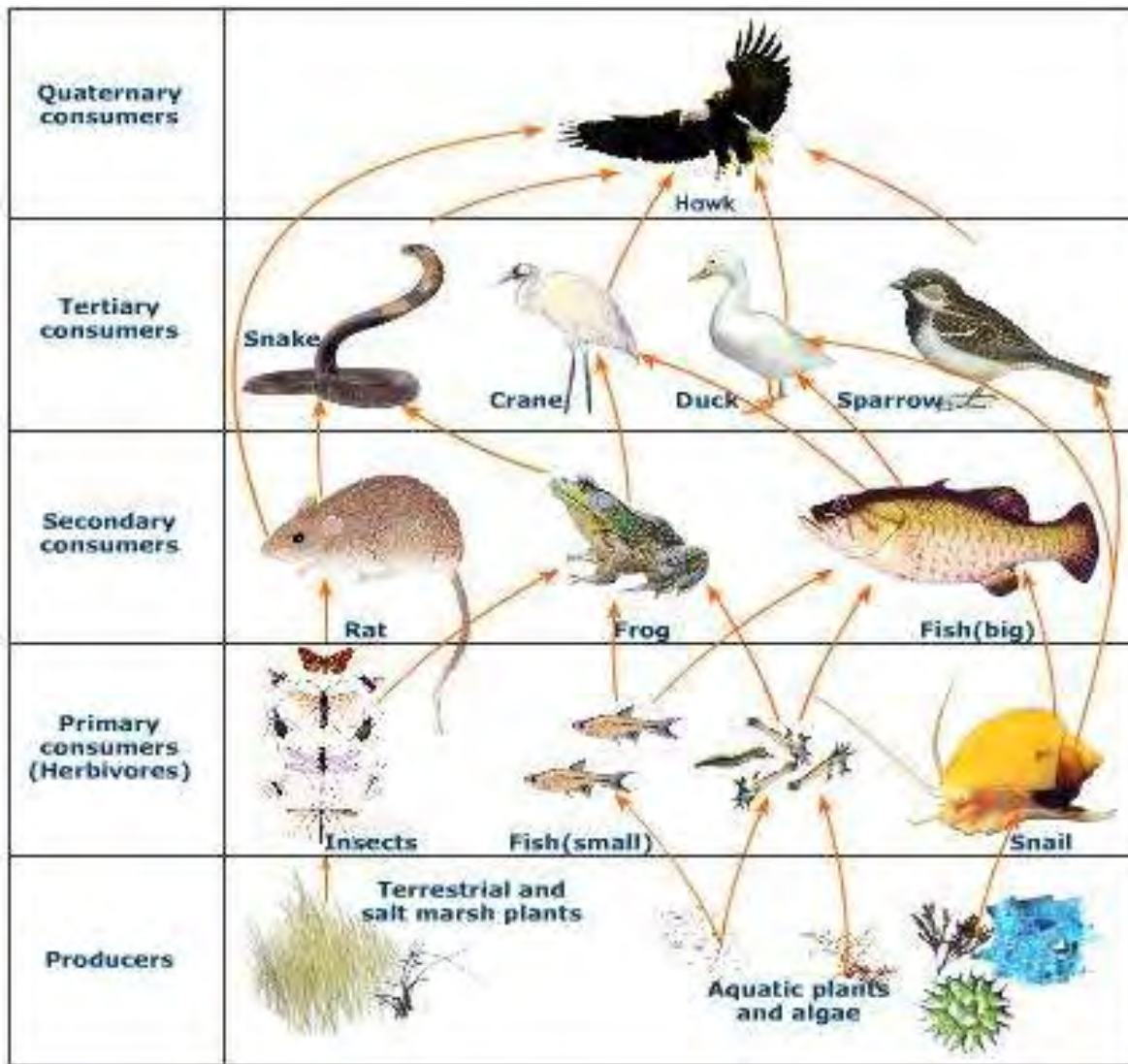






# 6 Icon Sites – Key Environmental Assets





**Think globally .....**  
**act locally**

**Understand complexity ...  
then seek simplicity**



# Source 2012



[www.ewater.com.au](http://www.ewater.com.au)